



Resource Management Land and Species

AT Day Introduction, Texas Master Naturalist, Cradle of Texas

1/26/19

Prepared by Peggy Romfh



Do YOU Manage Land and Species for Nature Conservation?

➤ YES if you follow USFWS Mission....

Work with others to conserve, protect and enhance fish, wildlife and plants and their habitats for the continuing benefit of the American people.



A Key Figure in Resource Management in the USA – Theodore Roosevelt

- Protected 230 million acres of public lands
- Created US Forest Service
- Established 150 nat. forests, 51 federal bird preserves (NWRs), 5 nat. parks, 4 nat. game preserves and 15 nat. monuments



1901-
1909

"While my interest in natural history has added very little to my sum of achievement, it has added immeasurably to my sum of enjoyment in life."

"We are prone to speak of the resources of this country as inexhaustible; this is not so."



Land vs. Species Resource Management

What is the Difference?

Land Management

- **Habitat conservation**
- **Ecosystem restoration**
- Invasive species removal
- Trash pickup
- Soil/water pollution and erosion control
- Watershed management

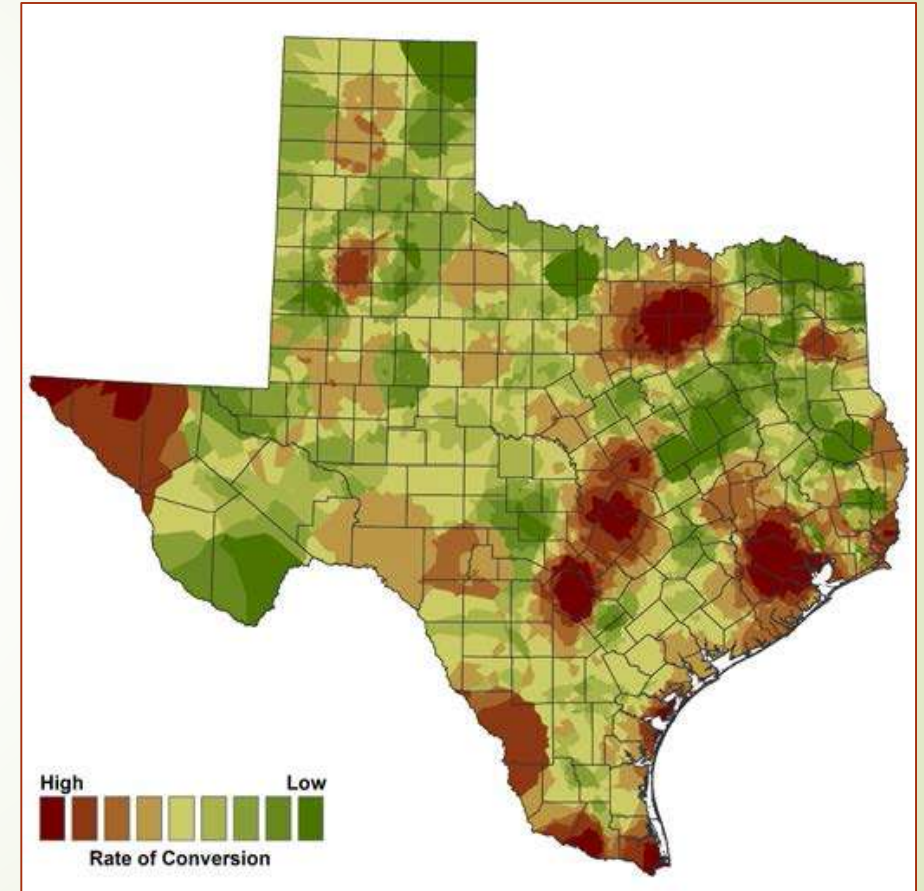
Species Management

- **Habitat conservation**
- **Ecosystem restoration**
- Threatened/endangered species protection
- Wildlife recovery projects
- Native pollinators
- Research

Land fragmentation and absence of urban planning????

Why is there Urgency Today to Protect Land and Species?

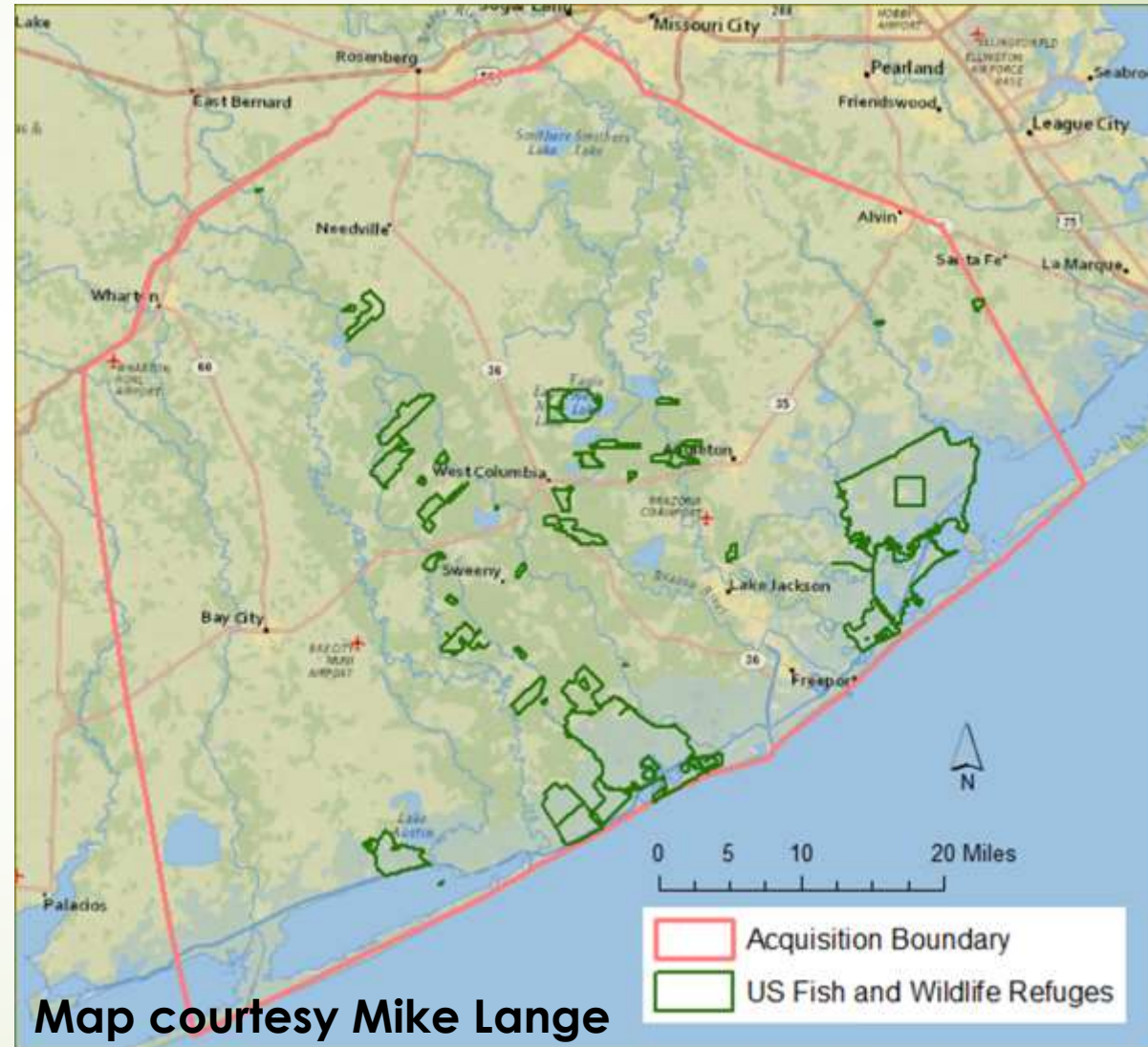
- USA has >200,000 species
 - >100 extinct; 1/3 at risk
- Texas in top 5 states for diversity
 - 27 extinct, >25 possibly
 - 10% at risk
- From 1997 to 2012
 - Human Population 19M to 26M
 - 1.1M acres of working land lost



See INSECT APOCALYPSE STORY

Example of Resource Management by Land Acquisition

- Land acquisitions by
 - USFWS – see map
 - The Nature Conservancy (to date, has protected 900,000 acres in Texas)





Where in Resource Management are Master Naturalists Involved?

- Invasive species removal
- Trash pickup
- Prairie and wetlands restoration
- Wildlife recovery and replenishment
- Pollinator gardens
- Land/habitat acquisition



**ADD and/or
MANAGE**



Recent Resource Projects Done by COT Master Naturalists Include

- Invasive species removal
 - Prairie, dune, Columbia Bottomland, and wetlands restoration projects
 - Adopt-a-Beach trash pickup
 - [Sea] Turtle Patrol
 - Native plant nurseries and big tree registry
 - Species research projects with USFWS and TPWD
- 