

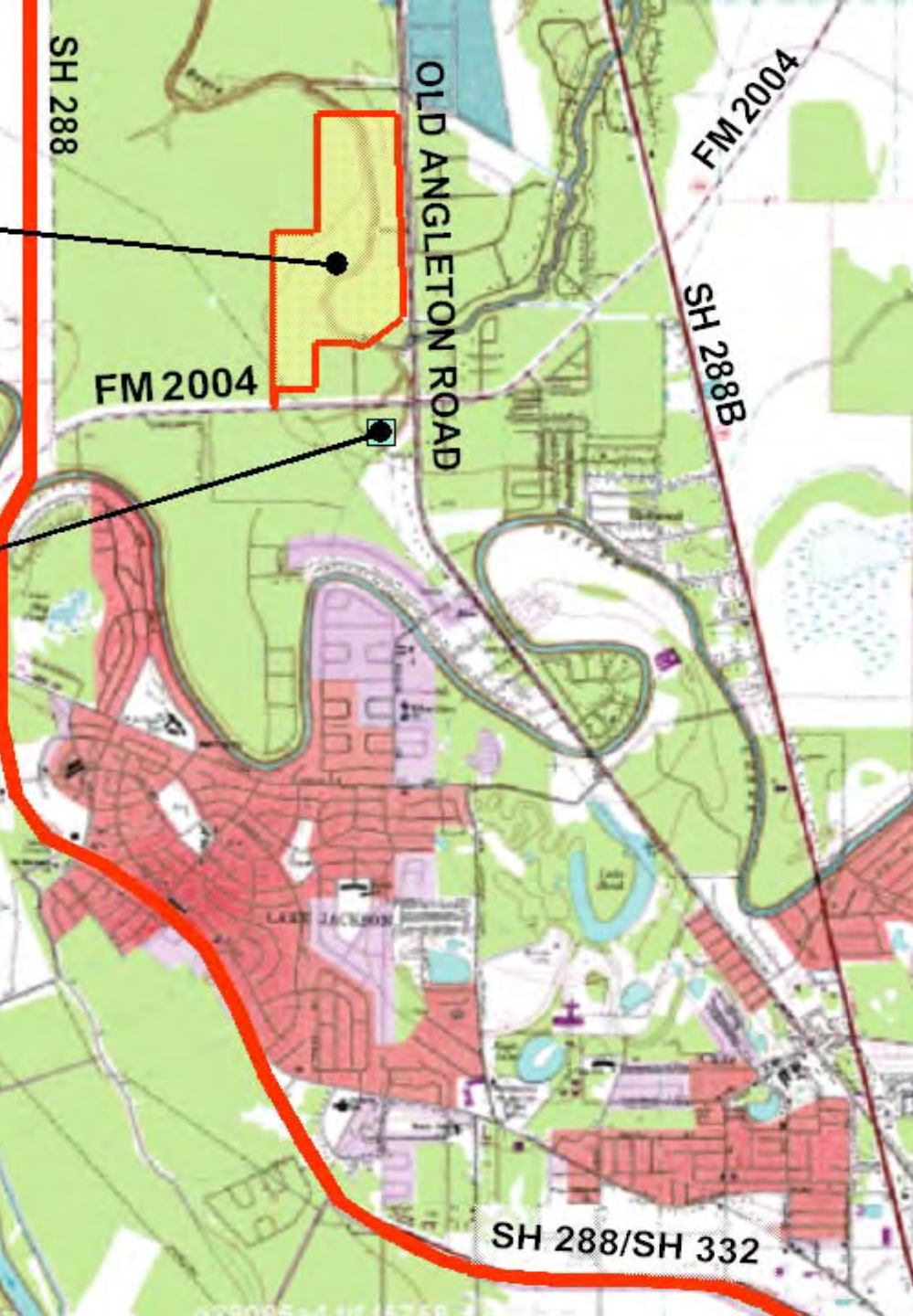


# Dow Woods Unit

San Bernard  
National Wildlife Refuge

# Dow Woods Unit

San Bernard National Wildlife Refuge



SH 288/SH 332



**What's here?**



Photo: David Plunkett



Photo: David Plunkett



Photo: David Plunkett



Photo: David Plunkett



Photo: Neal McIn



Photo: Neal McLean



# Burl Oak



Existing bayou crossing to be replaced

West trail

Northeast trail  
(John Tveten Trail)

Southeast trail

Modern  
Drainage Ditch

FM 2004

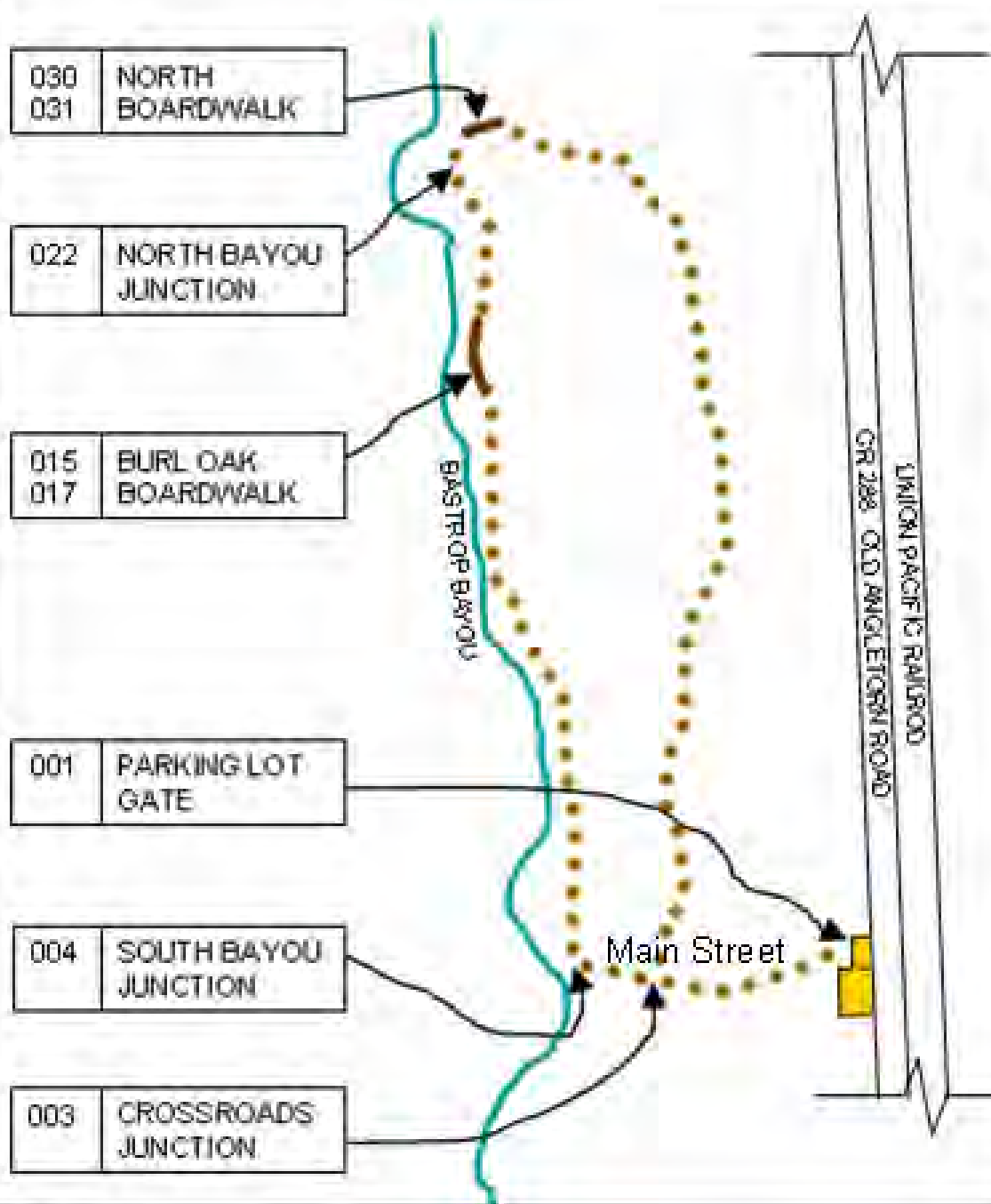
Restroom and pavilion in this area

Parking lot

"Slave ditch"  
(Hamilton-Jackson Canal)

Buc-ee's





## Map John Tveten Trail

(aka northeast concrete trail)

Waypoint number established during trail surveys

Common name



Drawn by Neal McLain based on work of Denis Mudderman. Original waypoint data compiled by FOBWR and TMN-COT volunteers during January and February 2010.

# Trail Survey Team



Photo: Denis Mudderman



Photo: Denis Mudderman



Photo: Denis Mudderman



Photo: Denis Mudderman

# Burl Oak





Photo: Neal McIn



Photo: Denis Mudderman



Photo: Denis Mudderman



Photo: Denis Mudderman



Photo: Denis Mudderman



Photo: Neal McLain



Photo: Neal McClain



Photo: Neal McLean



Photo: Neal McLean



Photo: Neal McIn



# Jennifer's Oak

# Southeast Trail Construction



Photo: Neal McLain



Photo: Neal McLain



Photo: Neal McLain



Photo: Neal McLain



Photo: Neal McLain



Photo: Neal McLain



Photo: Neal McLain

# Supervisors



# Northeast Trail Construction

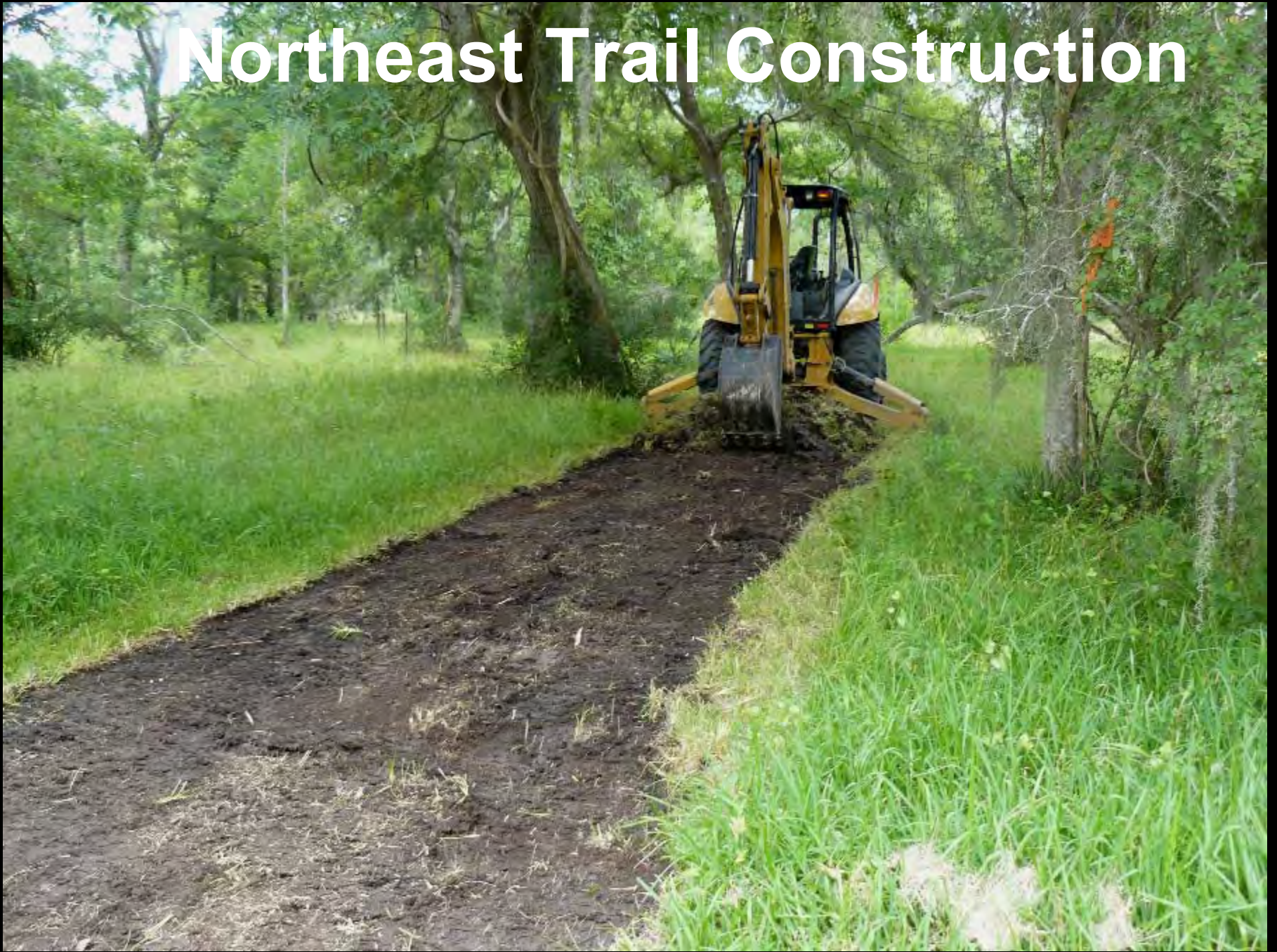


Photo: Neal McLain



Photo: Neal McLain



Photo: Neal McLain



Photo: Neal McLain

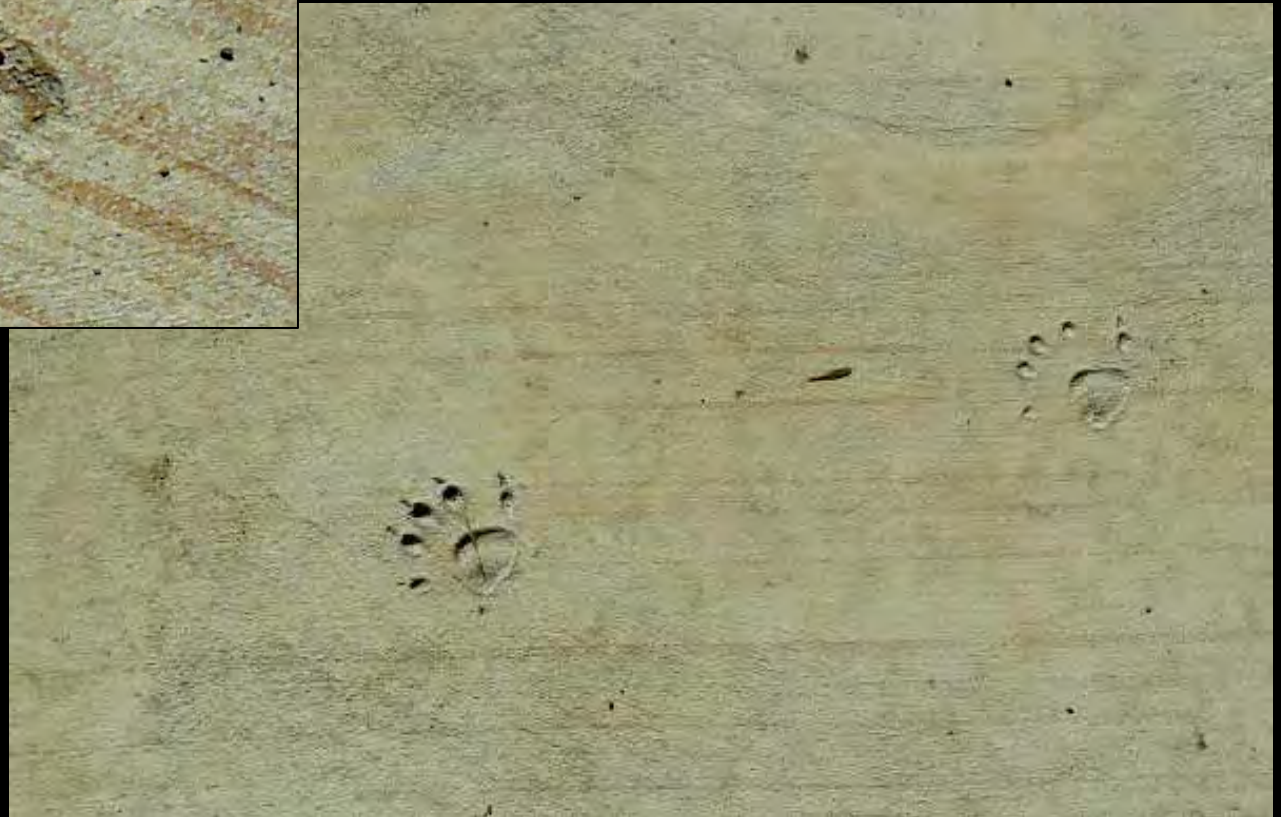


Photo: Neal McLain

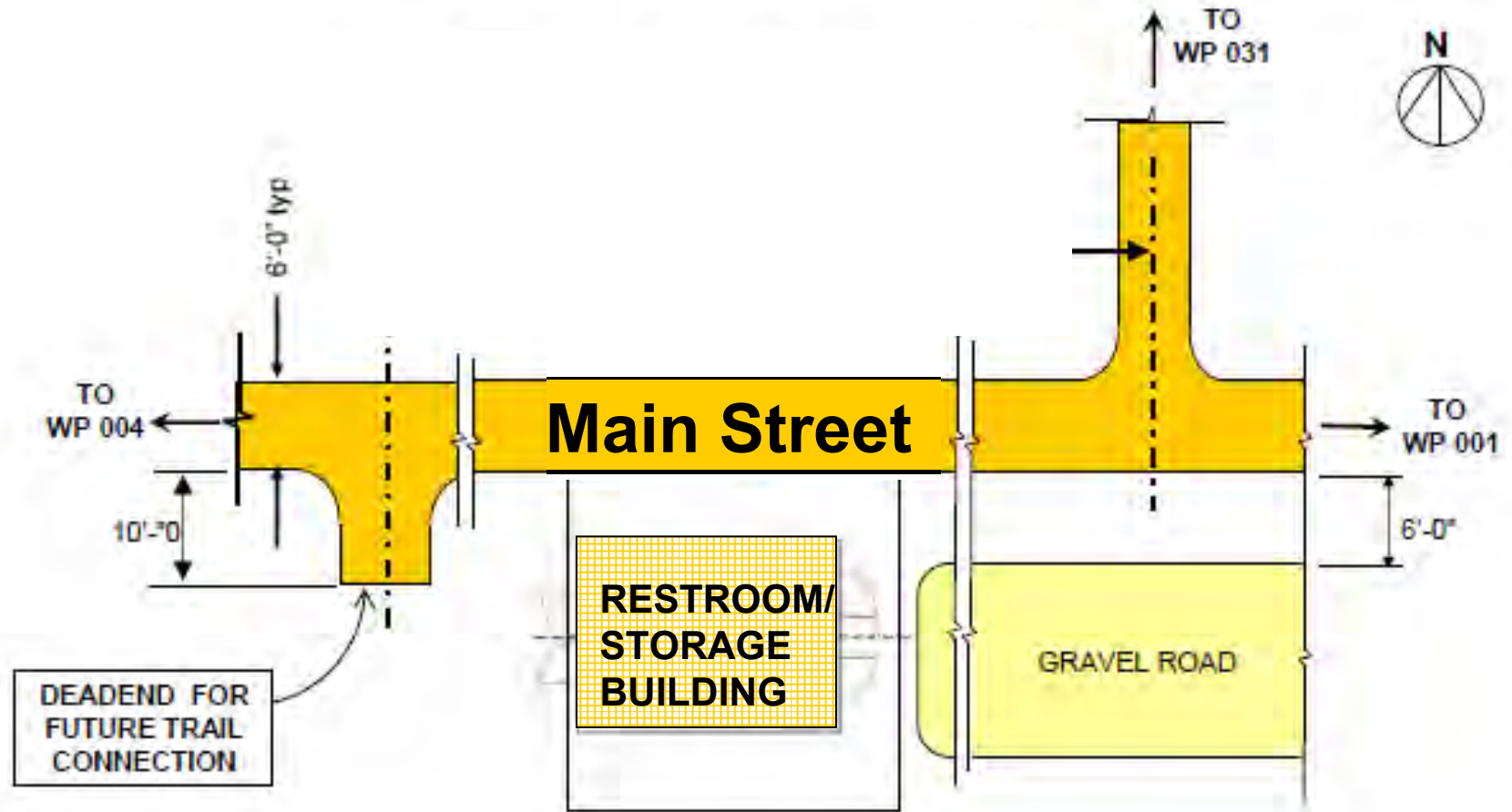


Photo: Neal McLain

# Fake Footprints



# Crossroads Junction



# Restroom Foundation slab



# Restroom Foundation slab



# San Bernard National Wildlife Refuge

